

TRP-C31

User's Manual

Ethernet to RS-232/422/485 Converter



Printed Jan. 2006 Rev 1.0

Trycom Technology Co., Ltd
1F, No.2-11, Sihu street, Yingge Township, Taipei, Taiwan ROC
Tel: 886-2-86781191, Fax: 886-2-86781172
Web: www.trycom.com.tw

Copyright

Copyright Notice: The information in this manual is subject to change without prior notice in order to improve reliability, design and function and does not represent a commitment on the part of the manufacturer. No part of this manual may be reproduced, copied, or transmitted in any form without the prior written permission of manufacturer. Acknowledgment Products mentioned in this manual are mentioned for identification purpose only. Products names appearing in this manual may or may not be registered trademarks or copyright of their respective companies.

Introduction

TRP-C31, a fast single ports serial to Ethernet device, is designed to instantly convert data from RS-232/422/485 interfaces to a 10/100Mbps Ethernet network running at the TCP/IP protocol. By using existing network infrastructure the device allow you to link a distant serial peripheral. You can reach TRP-C31 from Windows, Linux and UNIX without the need to modify existing software. The TR-C31 operates in “Direct IP Mode”, “Virtual COM Mode”, and “Paired Mode”. It has one synchronous DB-9 serial ports equipped 10/100 Mbps Ethernet RJ-45 connection. The Ethernet port may auto-select 10Base-T or 100Base-TX. TRP-C31 also offers a Heart Beat feature to ensure a reliable communicating connection. TRP-C31 will work at Loop back Mode, all data is sent back immediately. This feature makes the connection testing easy. And the industry standard DIN rail design enables fast and professional installation

Features

- DIN rail or Panel mount support.
- RS-232/422/485 all-in-one serial interface.
- Auto-detecting 10/100Mbps Ethernet interface.
- In Server mode supports individual client sessions for security.
- Virtual COM drivers for Windows NT/98/ME/2000/XP.
- Auto direction flow control on RS-485.
- Provide with +/- 15KV ESD protection on RS-232/422/485 signals.
- Supported baud rate up to 230.4 Kbps.
- Power/Link/COM Flow LED indicators.
- Support intranet and internet system setting function.
- Support screw terminal and standard external DC power adaptor.

Specifications

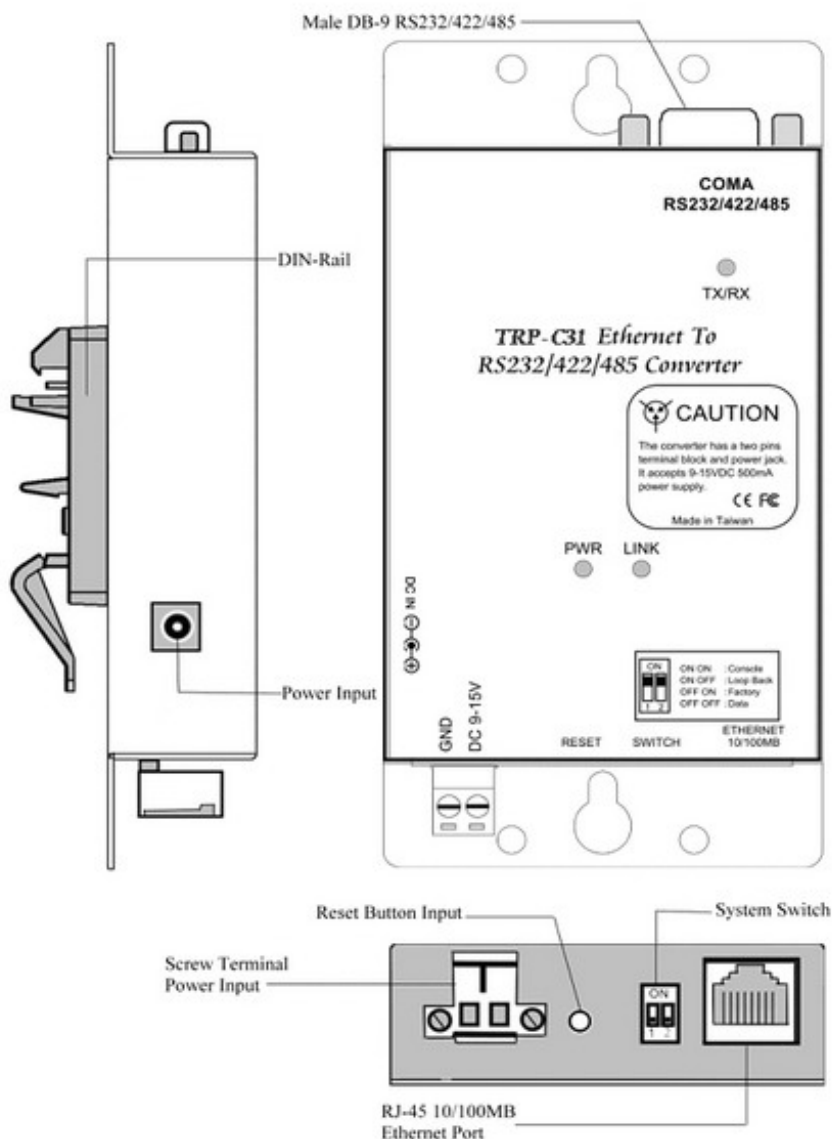
- CPU: RDC 80186.
- System memory: 1MB Byte.
- SDRAM: 1MB Byte.
- Flash: 256KB.
- Serial Memory: output: 64K bytes per port.
- LAN: 10/100 Mbps Auto-detecting.
- Power Input Voltage: DC +10V to +15V.
- LAN: 10/100 Mbps Auto-detecting.
- Serial Interfaces: RS232, RS422, and RS485 auto-switching.
- RS-232: TX, RX, RTS, CTS, DTR, DSR, DCD, and GND.
- RS-422: TX+, TX-,RX+, RX-,RTS+,RTS-,CTS+,CTS-,GND.
- RS-485: Data +, Data -, GND.
- Data Rate: 110 bps to 230.4 k bps.
- Parity: none, even, odd, mark, space.
- Data Bits: 5, 6, 7 or 8.

- Stop Bits: 1, 1.5 or 2.
- Protocol: TCP, IP, ARP, DHCP, Telnet, HTTP, UDP, ICMP.
- Power supply: Screw terminal, or standard external DC adapter.
- Power consumption: 15V/190 mA.
- Operating temperature: 0 to 60 °C.
- Storage temperature: -20 to 70 °C.
- Humidity: 10 ~ 90% Non-Condensing.
- Dimensions: 151mm X 77mm X 26mm.
- Weight:377g

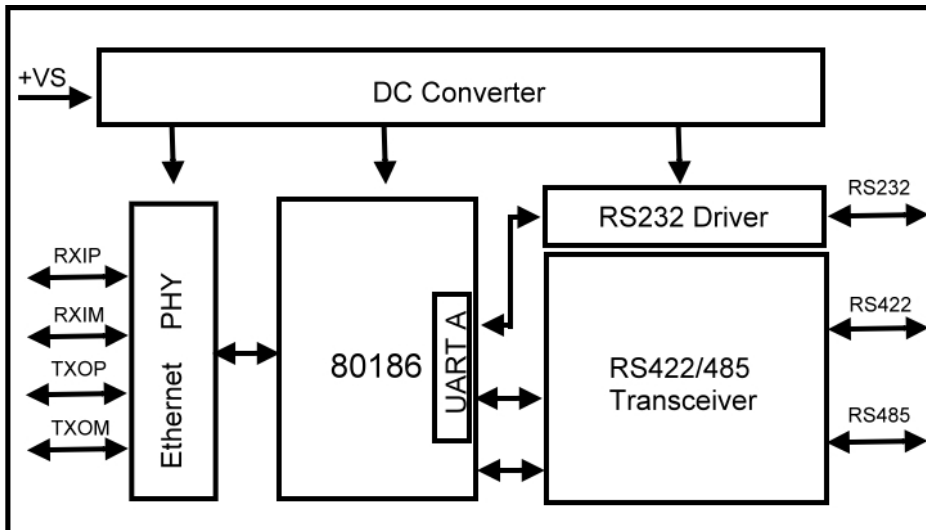
2. Hardware Description

The following information is provided to give the user an understanding of how to connect the TRP-C31 to the LAN and serial device. A review of the switch settings and the functionality of the LED's are also provided.

2-1. Panel Layout



2-2. Block Diagram.



2-3. LED display.

TX/RX LED: COM. Transmitting/Receiving

LINK LED: Ethernet Connection.

PWR LED: System is ready.(Blinking)

2-2. Serial Connection

The TRP-C31 has one DB-9 male connectors. The serial port is configured as a DTE (data terminal equipment) device. All PC COM ports are DTE ports. A null modem cable is required to make a connection between the COM port on a PC and the TRP-C31 serial port. A straight through cable is required to connect the TRP-C31 serial port to a DCE device.

2-3. Power Connection

The TRP-C31 has a two pins terminal block and power jack. Power can apply on either terminal block or the power jack. It accepts 9-15VDC/500mA power supply. Do not use both power sources simultaneously. When power is apply PWR LED will turn on and flash every one second to indicate the system is up and ready.

2-4. Ethernet Connection

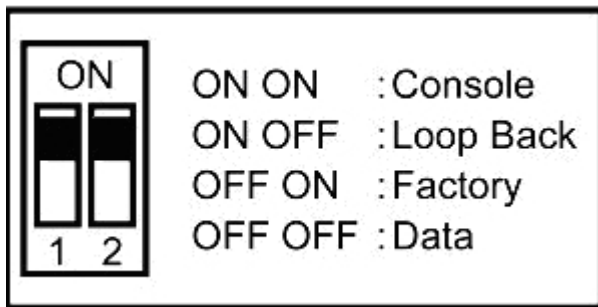
A straight-through Ethernet cable can be used to connect the serial server to an Ethernet hub, switch, or wall plate. A crossover Ethernet cable can be used to make a connection directly to the NIC (Network Interface Card) on a PC or laptop.

2-5. Reset Button

The reset button can be found between the switch and terminal block. To reset the unit manually apply power, insert a small plastic tool, and press lightly depressing switch. Hold for 3 seconds and release. The Link LED will turn off and turn back on. The TRP-C31 will revert to the last setting.

2-6. Dip Switches

A double DIP switch allows the TRP-C31 to be entered into Console/Loop back/Default/Data Mode.



When all these switches are moved into the ON position, the TRP-C31 enters Console Mode, allowing configuration of the TRP-C31 from a PC running a terminal program such as Hyper-terminal. When the TRP-C31 enters Console Mode, the Console Mode screen will appear in the Hyper-terminal program window. The serial port settings must be 8-N-1 at 9600 baud.

When the DIP switches are switched to the ON OFF position, the TRP-C31 will work at Loop back Mode, all data is sent back immediately.

When the DIP switches are switched to the OFF ON position, the TRP-C31 will revert to its factory version firmware no matter what newer firmware has been upgraded.

When all of the DIP switches are switched back to the OFF position, the TRP-C31 will enter Data Mode (RS232, RS422 or RS485).

2-7. DB9 Pin Configuration

Pin	RS-232	RS-422	RS-485
1	DCD	RXD (-)	
2	RXD	RXD (+)	
3	TXD	TXD (+)	D (+)
4	DTR	TXD (-)	D (-)
5	GND	GND	GND
6	DSR	CTS (-)	
7	RTS	CTS (+)	
8	CTS	RTS (+)	
9	RI	RTS (-)	

3. Default Settings

Model Number: TRP-C31

Password: Blank

DHCP: Disable

IP address: 192.168.1.1

Netmask: 255.255.255.0

Gateway : 192.168.1.254

Version & Date: Current firmware version number and date

Serial port: 1

Baud rate: 9600

Data/Stop bits: 8-1

Parity: None

Flow control: None

Protocol: TCP

Serial timeout: 0 seconds

TCP alive timeout: 0 minutes

Connection mode: Server

Delimiter HEX 1: 00

Delimiter HEX 2: 00

Force transmit: 0 ms

Serial port mode: Console

Maximum connection: 1

Remote IP address: 255.255.255.255

4. Install TRP-C31 Hardware

STEP1: Connect power source with TRP-C31, if power properly supplies the PWR LED will blinking.

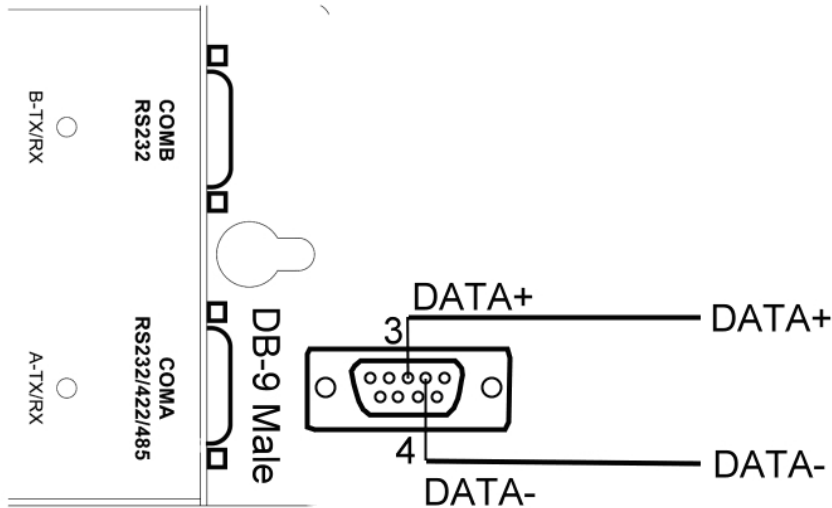
Warning: User can only choose one of 2 power source, external DC-Jack or Screw terminal DC input. Do not use external DC-Jack and screw terminal DC input simultaneously.

STEP2: Connect TRP-C31 with internet port (Ethernet Hub or Switch) by RJ45 LAN cable. If the cable properly connects the "LINK" LED will light up.

STEP3: Connect TRP-C31 with RS232 or RS422/485 serial device.

4-1. RS-485 Wiring

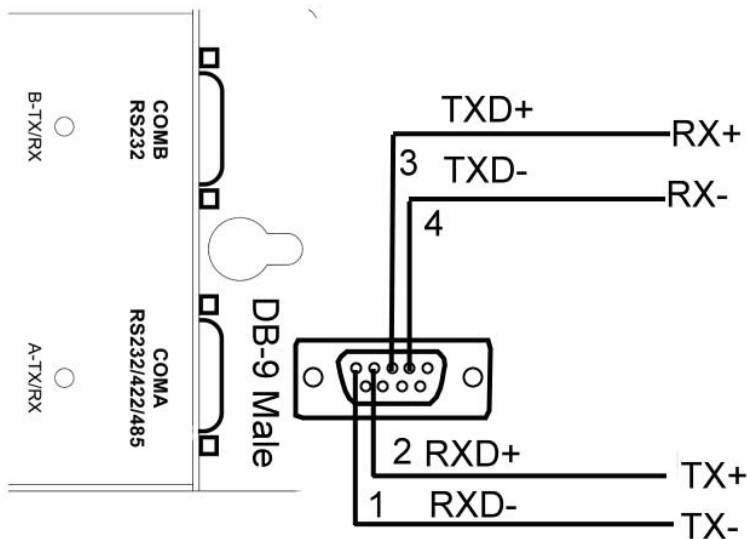
The RS-485 mode supports the Transmit and Receive Channels using 2-wire half-duplex operation. The data lines are differential pair Ground provides a common mode reference. Refer to the Pin out table for connections.



RS 485 Device

4-2. RS-422 Wiring

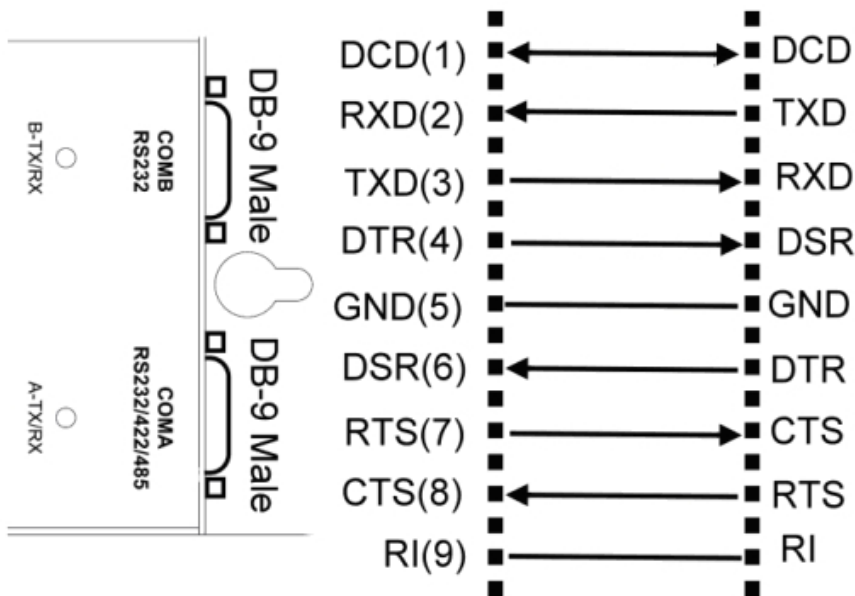
The RS-422 mode supports 4 channels with full duplex operation for Receive, Transmit, RTS (Request to send) and CTS (Clear to Send). The data lines are in differential pairs. Ground provides a common mode reference. To use handshaking Flow Control must be set to RTS/CTS during configuration. Refer to the Pin out table for connections.



RS 422 Device

4-3. RS-232 Wiring

The RS-232 supports 8 channels plus Signal Ground and is configured as DTE like a computer. Signals are single ended and referenced to Ground. To use handshaking, Flow Control must be set to RTS/CTS during Configuration. Refer to the Pin out table for connections.



4-4. RJ-45 LAN Cable Wiring Diagram

PC To TRP-C31: Please use crossover Ethernet cable.

HUB To TRP-C31: Please using straight through cable

5. Install “TRP-C3X Manager” Utility

It is recommended the user install the “TRP-C3X Manager” utility software and do a search for all TRP-C31 connected to the LAN. When this is completed a window will list the devices making them available for configuration.

Configuring the serial server to meet your LAN and application requirement is an easy process with the available setup menu in the “TRP-C3X Manager” software.

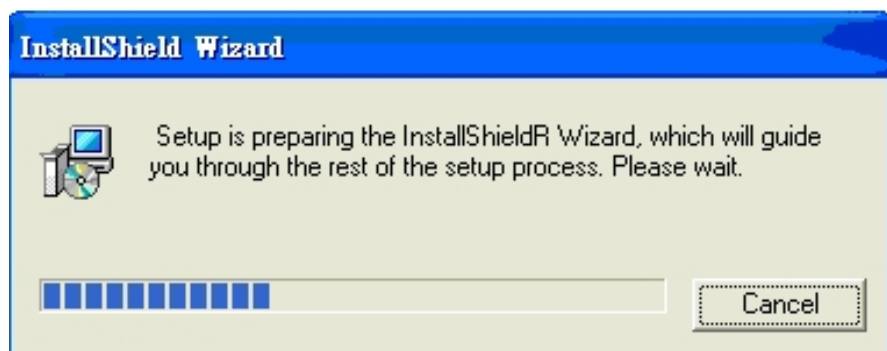
5-1. How to install TRP-C3X manager

The following procedure installs the “TRP-C3X Manager” software.

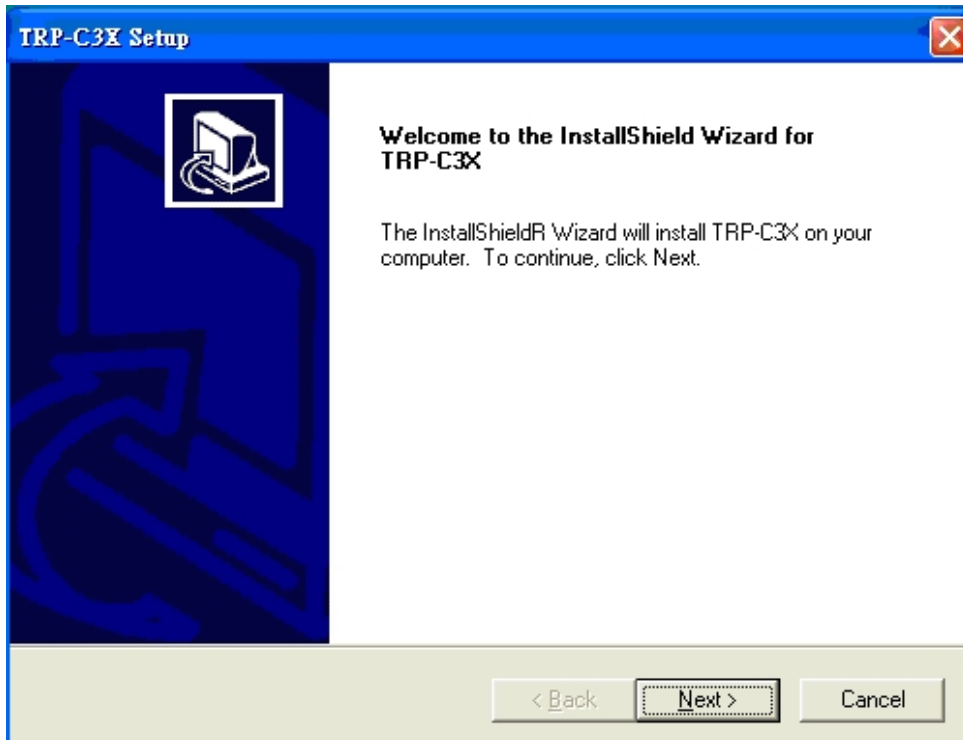
STEP1. Inserting TRP-C31 support CD, in the CD-ROM and select the TRP-C31 Directory.

Run start.exe.

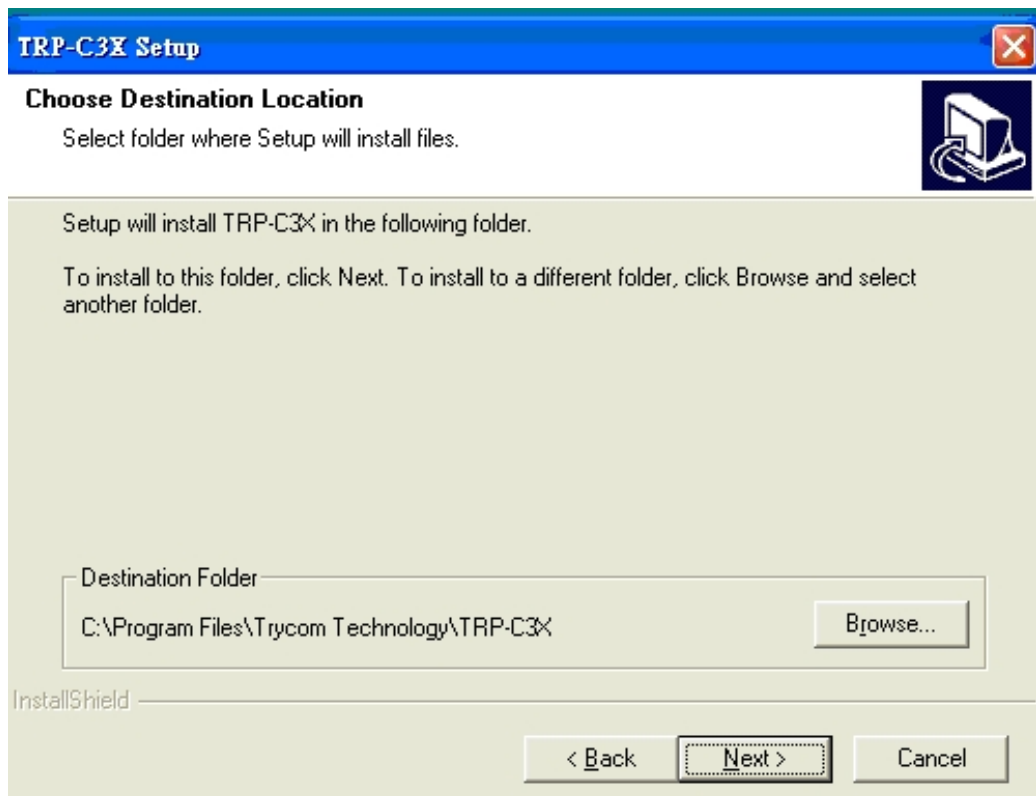
STEP2. The Install Shield Wizard window automatically display and start the setup procedure.



STEP3. Click the “Next” to continue the installation.



STEP4. In the Choose Destination Location window select “Next” to install the “**TRP-C3X Manager**” software in the default location. (User may select “Browse” to install into a selected directory)

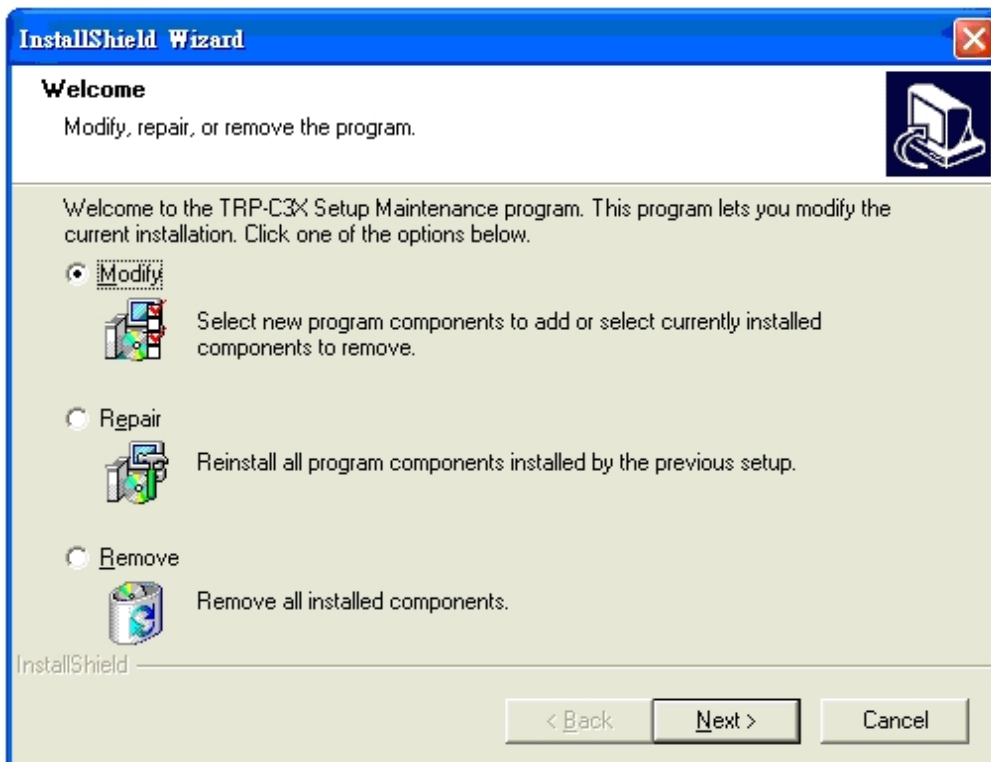


The installation progress will be shown until complete.

STEP5. Click “Finish” when the **Install Shield Wizard Complete** screen appears. When the installation is completed user may access to the Manager software in the program files. If loaded in the default location Go to **Start/Programs/Trycom/TRP-C3X Manager** to open.

6. Updating an Existing Installation

If an older version of the Manager software is already installed, the Modify, repair or remove the program window will appear when the installation process is initiated. The recommended procedure is to remove all installed components first. Once the software has been removed, install the new software.



Highlight remove.

7. How to configure TRP-C31

There are 4 ways to access the Server Properties and program the TRP-C31

1. TRP-C3X Manager software.
2. Console mode.
3. Telnet.
4. Web Server.

7-1. Using TRP-C3X Manager Software

The “**TRP-C3X Manager**” software performs several functions:

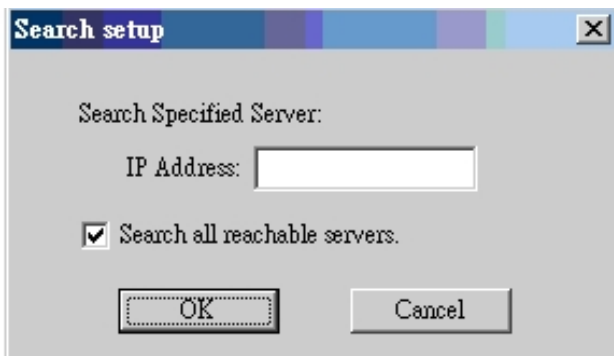
- A: Searching for TRP-C31 connected to the network
- B: Displaying and changing the configuration of TRP-C31
- C: Installing virtual COM ports on a computer
- D: Displaying and configuring virtual COM ports

- E: Uninstalling virtual COM ports on a computer
- F: Upgrading the TRP-C31 firmware
- G: Monitoring Port Status
- H: Saving and Loading Configuration Files

7-1-1. Searching LAN for TRP-C31

Once TRP-C31 is connected to the LAN the **TRP-C3X Manager** software will search it and display it in a window by name and IP address.

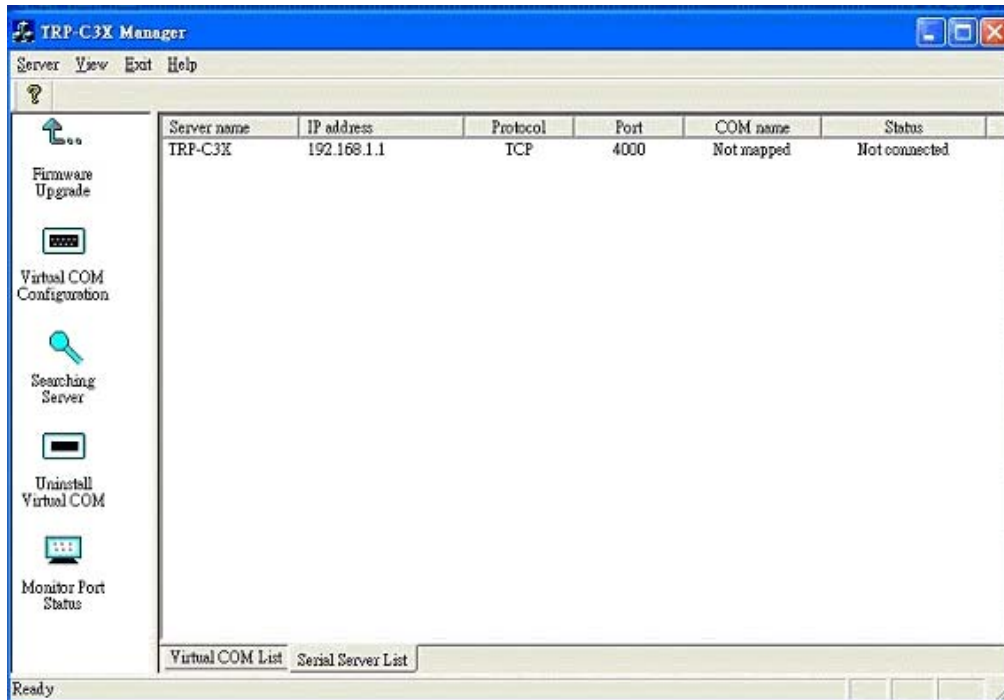
- A. Select **“TRP-C3X Manager”** Utility in the program file menu. If the default location was selected during the installation the program will be found under **“Start/Programs/Trycom /TRP-C3X”** utility. As soon as the **“TRP-C3X Manager”** Utility opens it will initiate Searching Server and after a few seconds the Serial Server List will display all (TRP-C31/32/34) serial servers on the network.
- B. To manually initiate a search for servers, on the menu side bar select Searching Server button. The Search Setup box will appear.



It provides two options for searching for servers on the network:

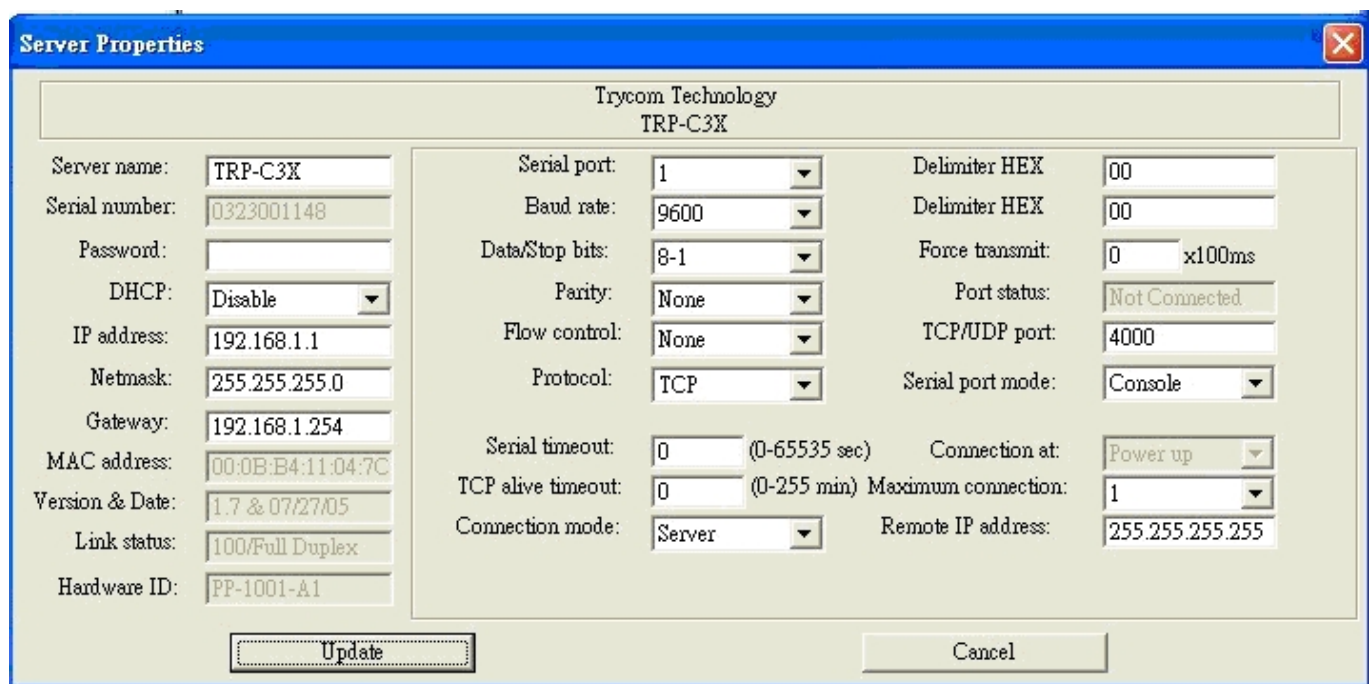
- Specify the IP address of the Serial Server.
- Search all reachable servers

Enter the IP Address assigned to the desired Serial Server or click Search all reachable servers, click **“OK”**. The Searching window is shown until all active Serial Servers on the LAN are listed in the Serial Server List window.



7-1-2. Configuring Server Properties

Highlight the serial server in the Serial Server List window and double click to open the Server Properties window. The Server Properties window is used to configure and store the Server configuration settings. Details for setting Properties are described in the next chapter. After configuring as needed, click Update to store the configuration in the server and click “Yes” to restart the server to make sure all settings are changed to conform to the desired application.



Server Name

The server name is user configurable. It is recommended users with more than one TRP-C31 connected to the LAN assign a new name to each. When the Manager software searches for servers on the LAN it will display the server name allowing the user to distinguish between TRP-C31s.

Serial Number

Each TRP-C31 has a unique serial number. This is fixed and cannot be changed.

Password

Entering a password activates a security feature on the serial server. Once a password is entered it will be required to access the menu and make changes.

DHCP

DHCP servers are a part of numerous LAN management systems. The DHCP field has two selections, "Enable" or "Disable". Arrow to the desired selection and select enter.

When enabled, TRP-C31 will send a DHCP request to the DHCP server, which will assign a dynamic IP address, netmask, and gateway to the TRP-C31. If a DHCP server is not available on the network the TRP-C31 will time out after 10 seconds and the default values will remain. When DHCP is enabled, the IP address, Netmask and Gateway fields become inaccessible and cannot be changed by the user.

IP Address

A static IP address can also be assigned in this section of the menu. A dynamic address assigned by the DHCP server may change if the TRP-C31 loses the Ethernet connection or power is removed. The host (client) communication software requests a connection to the specific IP address of the serial server. If the DHCP reassigns a different IP address the software will not be able to communicate with the hardware. It is recommended to use a static IP address.

A static IP address is permanent and will not change unless changed in the menu. In most cases the network administrator establishes the static address to be used.

Netmask

The default LAN netmask is configured for a Class C address. This may be reconfigured by the user.

Gateway

The gateway IP address allows users to access the serial server from outside the LAN.

MAC Address

The MAC address is not adjustable. This is assigned in the factory. Every Ethernet device

manufactured has its own unique MAC address.

Version & Date

The currently loaded version of the firmware, and when it was released, are shown here.

Link Status

Link status automatically displays the type of Ethernet connection. It will either display 10 BaseT or 100BaseTX in full duplex or half duplex. This will depend on the LAN, switches, hubs used in the LAN topology.

Server Serial Port

This field indicates the number of the port for which serial server properties are currently being displayed. Changing the number in this field will cause all the other fields to display the properties for the specified port. Note, however, that before changing ports, any change to properties must be updated (Saved) or the serial server will not retain them.

Baud Rate

The serial port baud rate on the TRP-C31 must match the serial baud rate of the connected device unless using Virtual COM mode. In Virtual COM mode the software program will establish serial settings.

Data/Parity/Stop

This setting will have to match the data format of the connected device unless using Virtual COM mode. In Virtual COM mode the software program will establish serial settings.

Flow Control

The flow control setting must match the connected serial device unless using Virtual COM mode. In Virtual COM mode the software program will establish serial settings.

Protocol

Select TCP or UDP protocol. If the application does not require a UDP connection, select TCP. TCP guarantees reliable communication with error checking whereas UDP provides faster transmission.

When UDP mode is chosen the *Serial timeout*, *TCP alive timeout*, *Connection mode*, *Connection at*, *Maximum connection* and *Remote IP address* fields are replaced with the following three fields: *Destination IP address range*, *Port number* and *Source IP address range*. In this mode the server can be configured to broadcast data to and receive data from multiple IP addresses. Four IP address range fields are provided.

Server Properties

Trycom Technology
TRP-C3X

Server name: TRP-C3X
 Serial number: 0323001148
 Password:
 DHCP: Disable
 IP address: 192.168.1.1
 Netmask: 255.255.255.0
 Gateway: 192.168.1.254
 MAC address: 00:0B:B4:11:04:7C
 Version & Date: 1.7 & 07/27/05
 Link status: 100/Full Duplex
 Hardware ID: PP-1001-A1

Serial port: 1
 Baud rate: 9600
 Data/Stop bits: 8-1
 Parity: None
 Flow control: None
 Protocol: UDP

Delimiter HEX: 00
 Delimiter HEX: 00
 Force transmit: 0 x100ms
 Port status: Not Connected
 TCP/UDP port: 4000
 Serial port mode: Console

Destination IP address range:	Port:	Source IP address range:
0.0.0.0 to 0.0.0.0	4000	0.0.0.0 to 0.0.0.0
0.0.0.0 to 0.0.0.0	4000	0.0.0.0 to 0.0.0.0
0.0.0.0 to 0.0.0.0	4000	0.0.0.0 to 0.0.0.0
0.0.0.0 to 0.0.0.0	4000	0.0.0.0 to 0.0.0.0

Update Cancel

Serial Timeout

Default is 0, or no timeout. Setting timeout to any value between 1 and 65535 seconds activates it. If communications are idle for specified timeout value the serial server will reset and make itself available for another connection.

TCP Alive Timeout

This monitors TCP activity. If TCP activity stops for the length of time specified in this field the connection will be closed. This field can be set to any value between 0 and 255 minutes. If zero, or no value, is entered into this field the server will not disconnect.

Connection Mode

The Connection mode field has three options, Server, Client and Client (no heartbeat). When Client or Client (no heartbeat) is selected, the *Connection at* field automatically becomes active (allowing the user to select Power up or Data arrival).

- When using the Virtual COM Port feature, select Server.
- When using a TCP or UDP Socket program, select Server.
- When using Paired Mode communication between two serial servers set up one as a Client and the other as a Server.
- When connecting to a server that does not support Heartbeat, select Client (no heartbeat).

Delimiter HEX1 and Delimiter HEX 2

These two fields allow the user to enter two ASCII characters (in hex format) that delimit the beginning and end of a message. When a message with both these delimiters is received at the serial port, the data contained in the serial buffer is placed in an Ethernet packet and sent out the Ethernet port. If only Delimiter 1 is set (Delimiter 2 is zero or blank), upon receiving Delimiter 1 the TRP-C31 will put all the data in the serial buffer in an Ethernet packet and send it out the

Ethernet port. If serial data greater than 1 kilobyte is received it will automatically be placed in an Ethernet packet and sent out the Ethernet port.

Force Transmit

This field allows the user to set a maximum time limit between transmissions of data. The value set in this field multiplied by 100 ms determines the Force Transmit time. When the elapsed time reaches the time configured in this field, the TCP/IP protocol will pack the data currently in the serial buffer into a packet and send it out the Ethernet port.

Port Status

This field indicates whether a serial port is connected to a server or by a client.

TCP/UDP Port

The TCP/UDP Port defines a communication port number. In all modes of operating, Virtual COM, Direct IP, and Paired modes, both the TCP/UDP Client and server port settings must match.

For example the Virtual COM defaults setting TCP/UDP Port # 4000. If the port # of the TRP-C31 is changed to 4001, the Virtual COM TCP/UDP Port will have to be changed to 4001.

Serial Port Mode

This allows configuration of the serial server for the following modes of operation:

- **Console:** When this mode is selected and the server is updated, a PC running a communication program such as Hyper-terminal can communicate with the serial server via the Console Mode serial port (Port 1 on TRP-C31), displaying the Server Properties screen and allowing configuration of the server and its ports.
- **Upgrade:** When this mode is selected and the server is updated, firmware can be uploaded into the serial server via the Console Mode serial port or a virtual COM port appeared to the number of the Console Mode serial port.
- **Default:** When this mode is selected and the server is updated, it will revert the server to its default configuration.
- **RS-232:** When this mode is selected and the server is updated, the selected serial port will become a RS-232 serial port on the server.
- **RS-422:** When this mode is selected and the server is updated, the selected serial port will become a RS-422 serial port on the server.
- **RS-485:** When this mode is selected and the server is updated, the selected serial port will

become a RS-485 serial port on the server.

Connection At

When the Connection Mode field is set to Client or Client (no heartbeat), this field becomes active, allowing the TRP-C31 (acting as a client) to connect to the server either on Power up or on Data Arrival (first character arriving).

Maximum Connection

This field allows the user to configure the Serial Server to have up to eight TCP connections.

Remote IP Address

This is a security feature that is activated when the IP address of the desired client is programmed into the remote IP Address setting of the menu. This tells the TRP-C31 to communicate with only the listed IP address and to filter out all other requests for connection. The TRP-C31 is setup in the menu as a TCP or UDP server to us this feature.

The default setting is 255.255.255.255. It is recommended not to change this setting until the application has been tested and is communicating properly. At that point the address filtering feature of the TRP-C31 can be activated.

Update/Save

Server properties must be updated separately for each serial port. Updating varies slightly depending on which of the four configuration user interfaces are used.

Updating the Server Properties in Manager Software

From the Server Properties screen, click the Update button to store the configuration settings for the currently selected port. The “vcomui” dialogue box will appear indicating you must restart the device before the new settings will take effect. Click Yes.

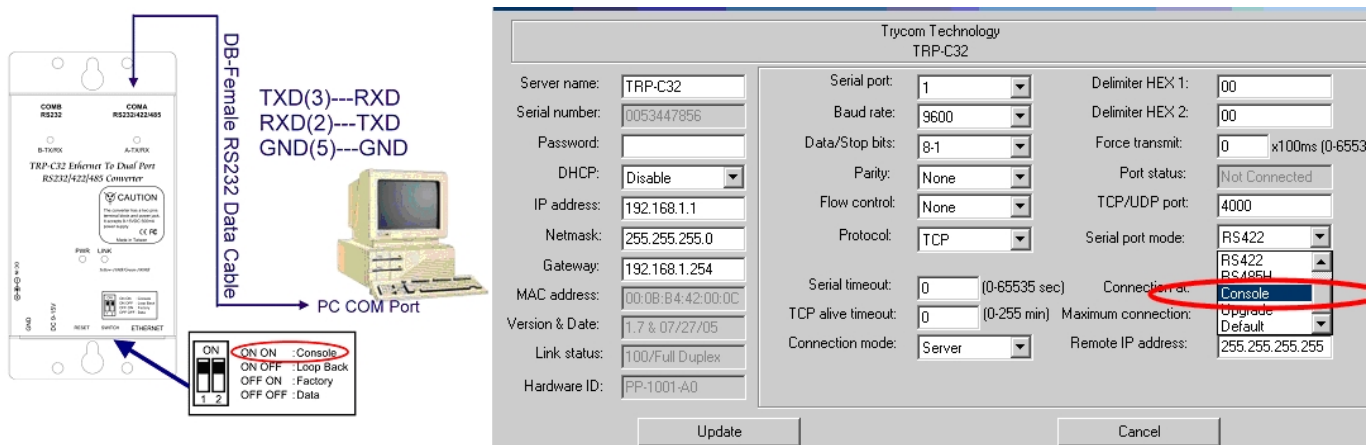


7-2 Using Console Mode

The console mode allows access to the TRP-C31 setup menu. This is one way to reconfigure the default settings for the application. A serial connection is made between a COM port on the PC and the TRP-C31 serial port A with a null modem cable. In console mode, the serial port defaults to an RS-232 interface.

The TRP-C31 serial port default settings are, baud rate 9600, 8 data bits, no parity, and 1 stop bit. Hyper Terminal should be used for this type of setup. Hyper Terminal's serial settings are configured the same as the mentioned default settings of the TRP-C31 and must be set to VT100 emulation mode. The default settings are used only if they have not been changed

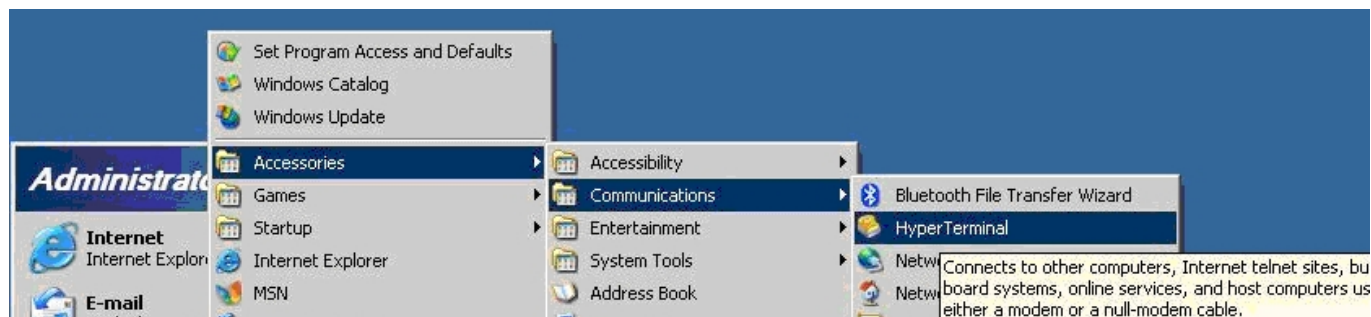
7-2-1 Console Mode Hardware Wiring



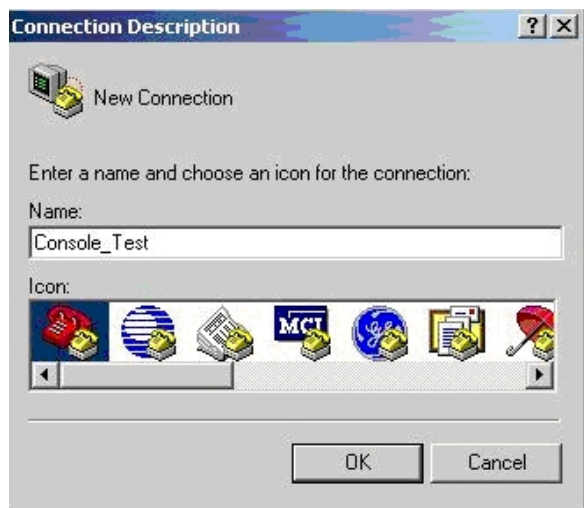
7-2-2 Console Mode Software Install

STEP1. Select "Hyper Terminal" WINDOWS Utility

Start ---Accessories---Communications --- Hyper Terminal



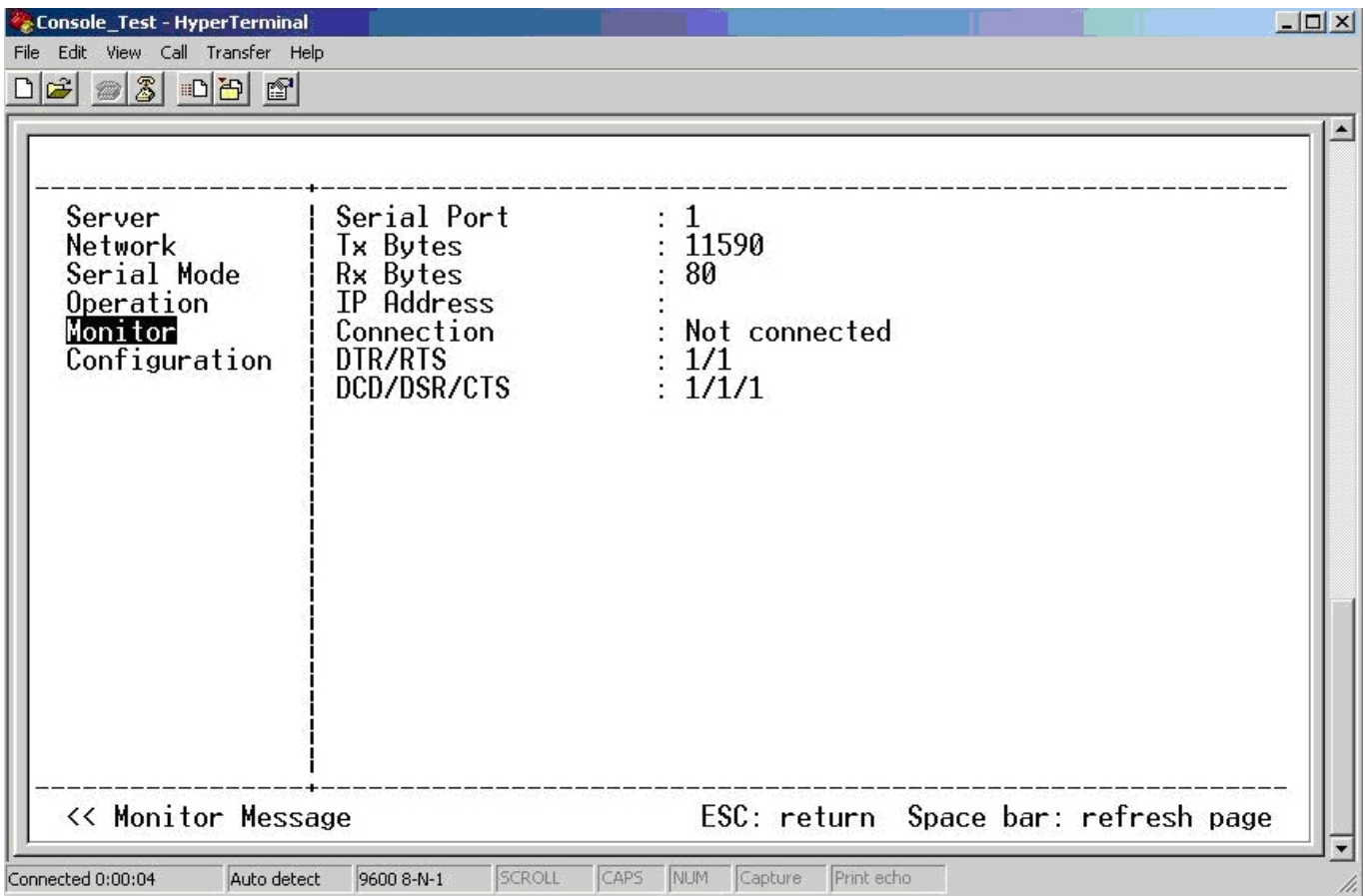
STEP2.Select "New Connection" and Enter a name, click "OK"



STEP3. Enter the COM Port number that TRP-C31 connect using, click “OK”



STEP4. Press the “Space bar” the TRP-C31 firmware setting screen will show.



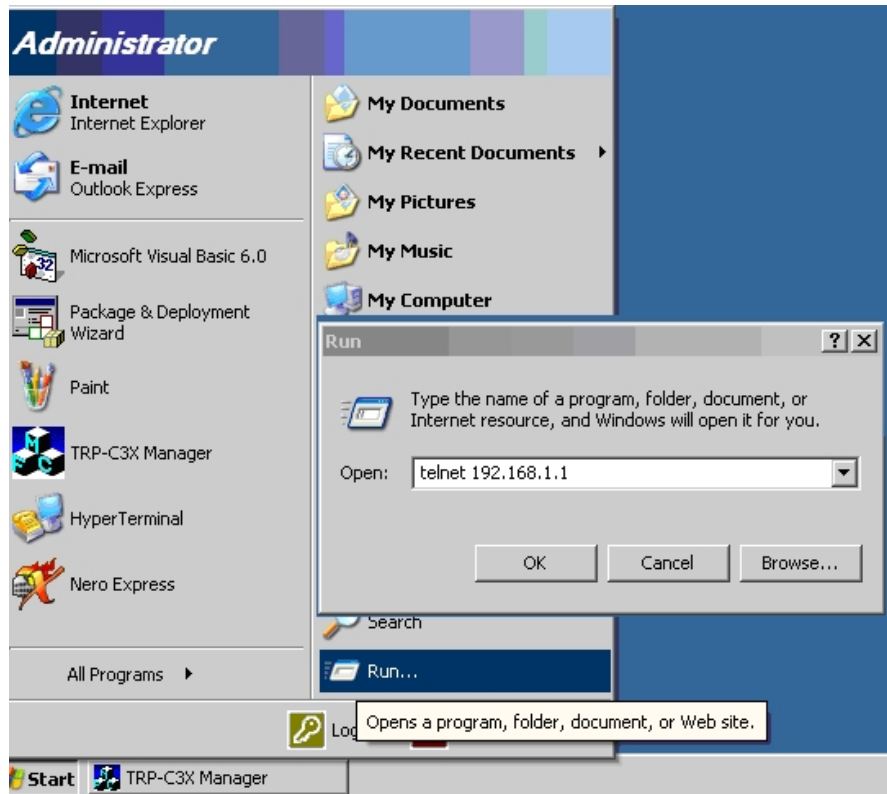
You can set the TRP-C31 by Console mode.

7-3.Using Telnet

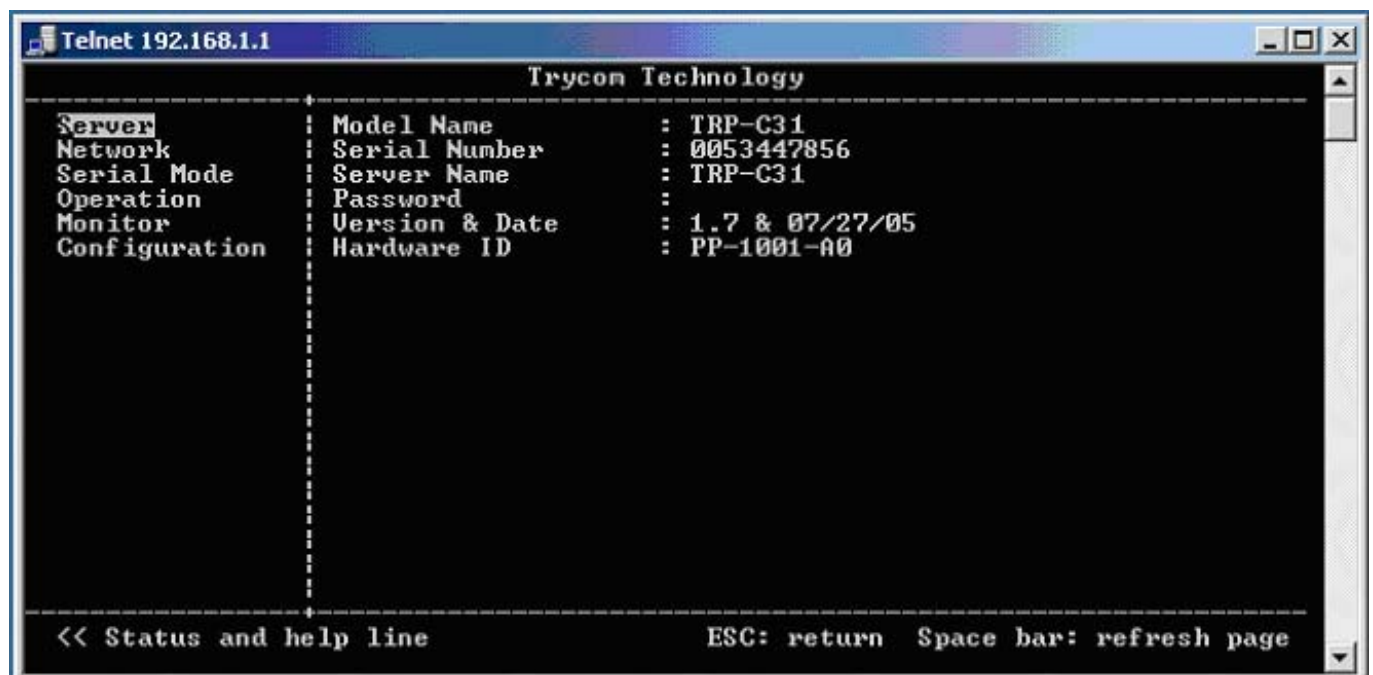
Telnet can be used to configure the TRP-C31 Serial Server from any PC on the LAN. The Telnet window displays the same configuration information shown in Console Mode and allows server properties to be configured. See chapter 6 for details on Server Properties.

Ensure the PC and TRP-C31 are connected to the LAN, and the serial server is in RS-232, RS-422 or RS-485 mode before you can telnet to it and access the configuration screens. From the **Desktop**, click **Start**, and then **run**. The Run dialogue box will open. Type in Telnet and the IP address of the Serial Server which to be configured, click **OK**.

STEP1. Select Start then Click “RUN” then key in the “Telnet IP”



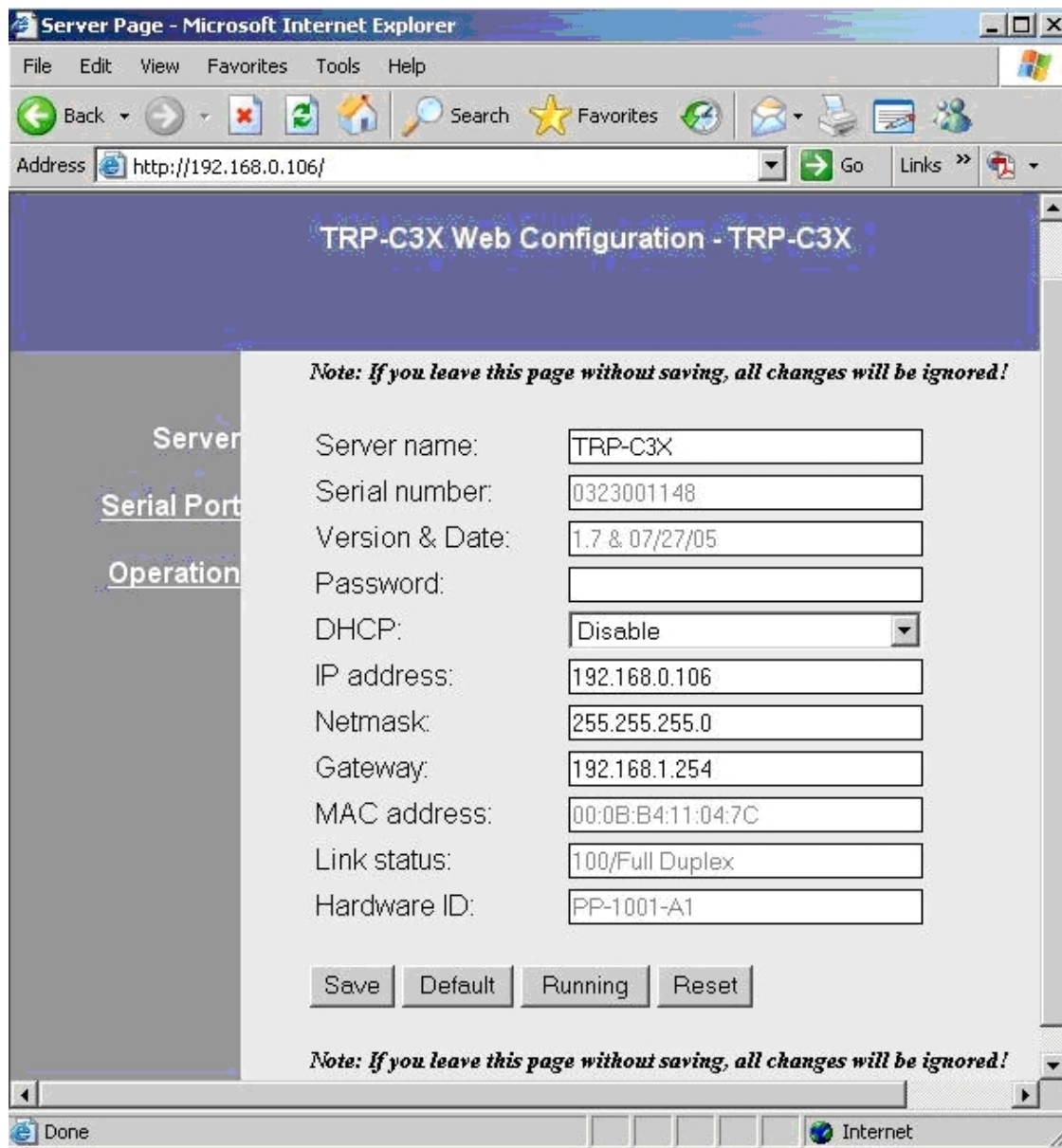
STEP2. Click the “OK” TRP-C31 firmware setting will show as following screen. You can set the TRP-C31 by Telnet mode.



7-4 Using the WEB Server mode

The Web Server can be used to configure the TRP-C31 Serial Server from any web browser software (such as Internet Explorer). Server properties can be set up using three browser pages. See chapter 6 for details on Server Properties.

In Internet Explorer type the IP Address of the Serial Server into the address field near the top of the window and press the **Enter** key. The following window will appear:



8 Virtual-Com

The Virtual COM Port feature allows Windows platform software using standard API calls to be used in an Ethernet application.

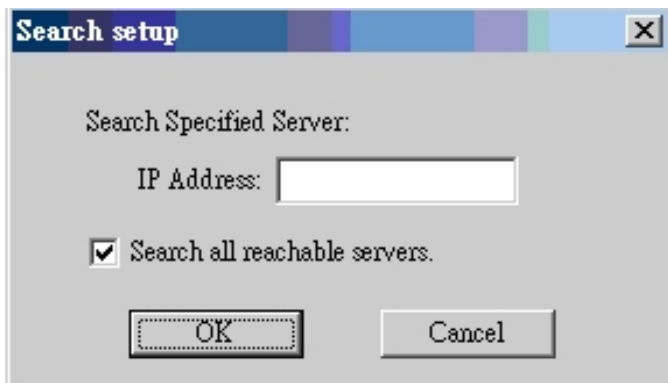
Running the Install Virtual COM port software adds a COM Port in the Device Manager of the operating system. The COM port will look like a standard COM port to Windows software used in most applications allowing the software to open a connection with the serial port located

anywhere on the LAN. When using the virtual COM port the TRP-C31 is configured as a TCP or UDP Server.

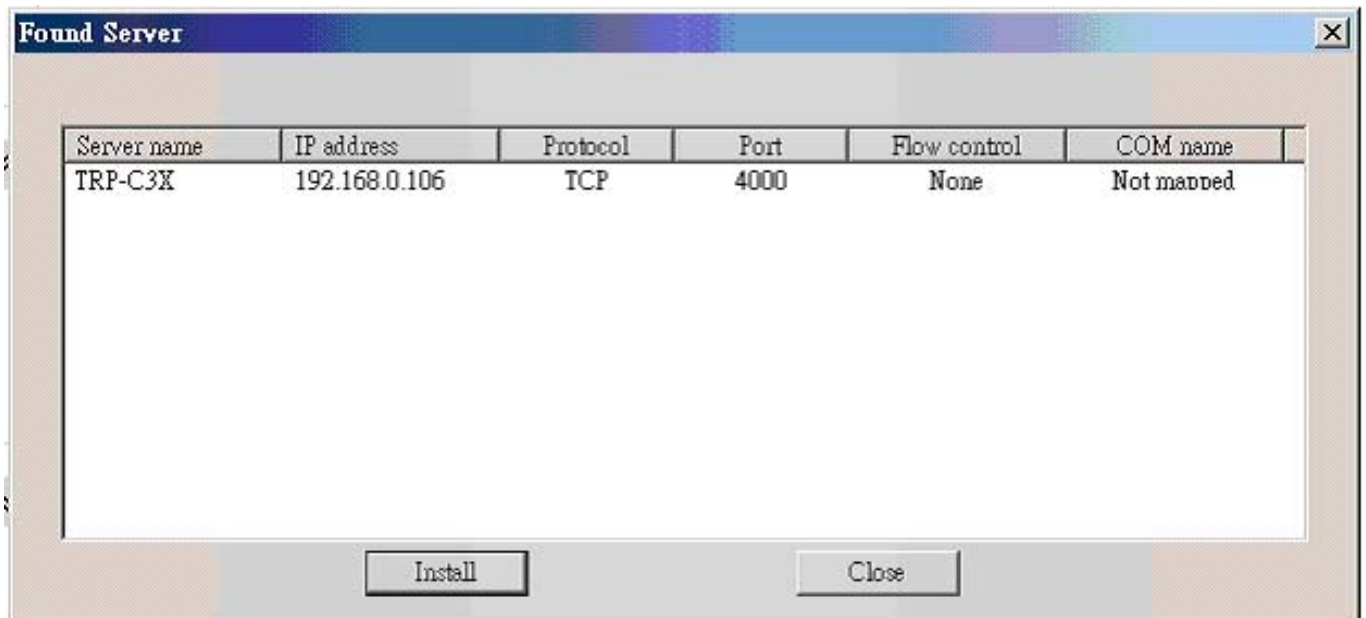
8-1 Installing Virtual COM Port

STEP1. On the Desk Top select Start/Programs/Trycom /**Install Virtual COM**.

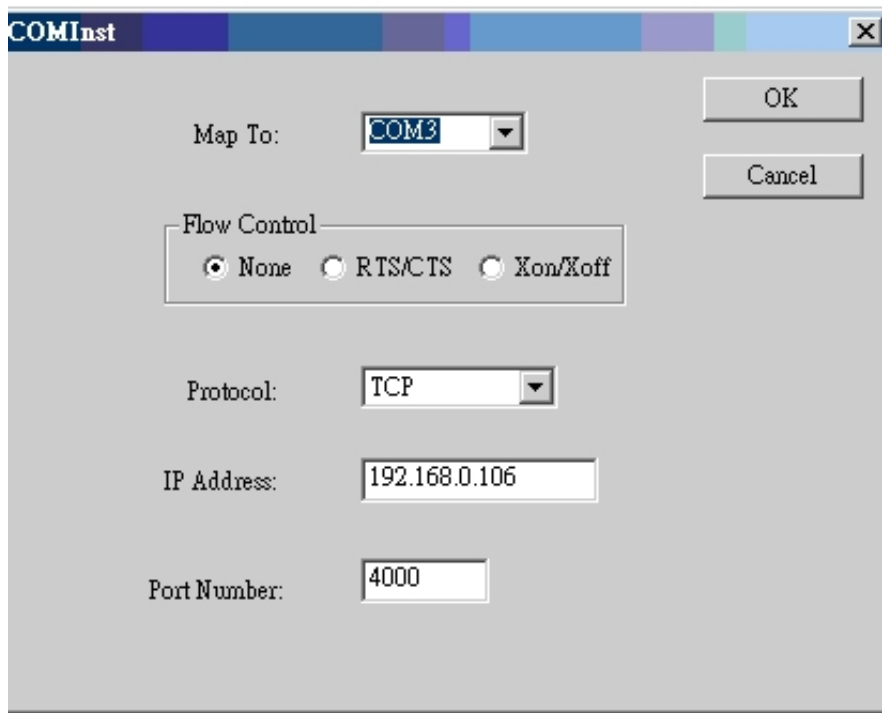
STEP2. Select the **Search all reachable servers** check box, then click OK.



STEP3. The **Install Virtual COM** program will automatically search the LAN for all available TRP-C31 serial servers and display them in the **Found Server** window. Highlight the desired serial server and click **Install**. The **COMInst** window appears.



STEP4. When the **COMInst** window opens select COM port # to map the serial server to. The Flow Control, Protocol, IP Address, and Port Number will mirror the settings of the selected serial server. Highlight the desired COM port # and select OK.



Note1. If any settings are changed in this part of the Virtual COM setup, it will only affect the settings in the operating system Device Manager. It will not change the settings in the TRP-C31.

Note2. The settings of the Virtual COM port in the Device Manager must match the TRP-C31 Configuration menu. If the settings do not match, the software connecting to the Virtual COM port will be unsuccessful in opening the COM port.

Note3. In **Windows XP** a Hardware Installation window stating that the drivers have not been tested by Microsoft may appear. Select “Continue Anyway” to proceed with the installation.

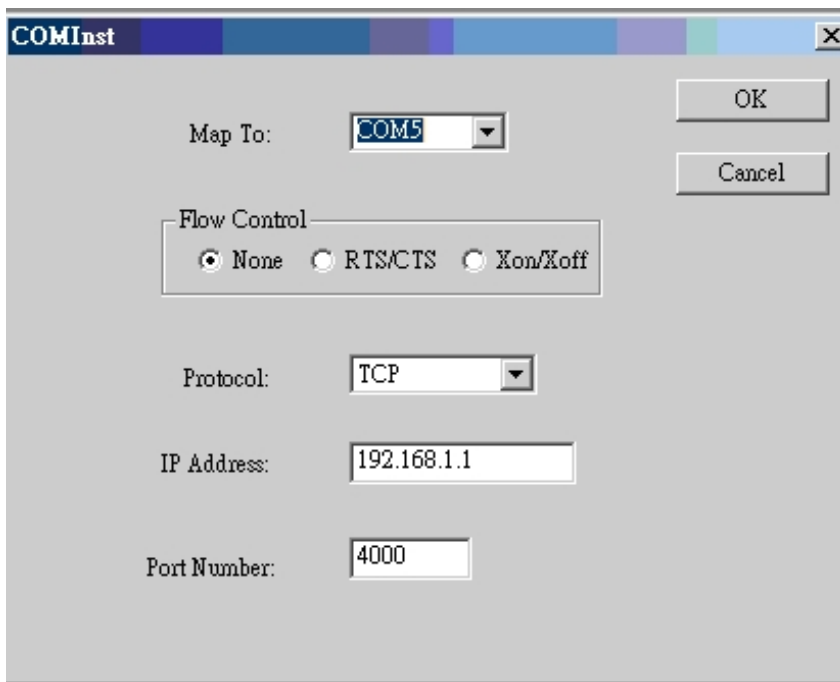
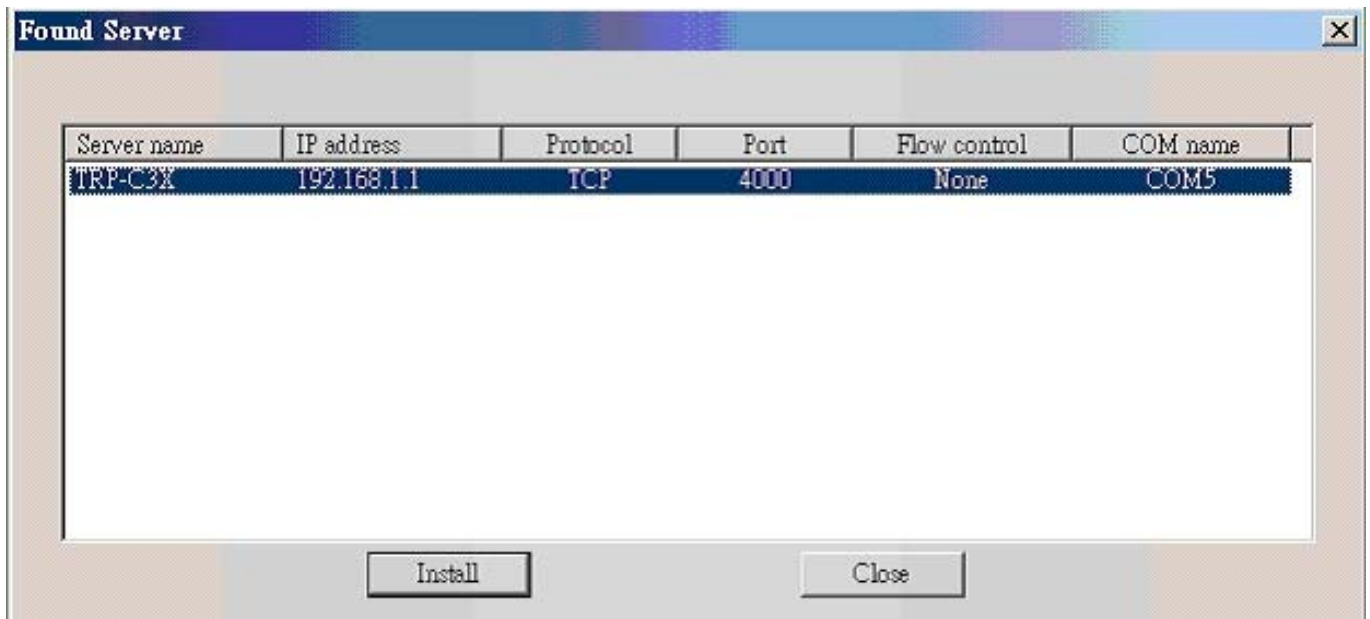
STEP5. When Virtual Com installation completed, click “close” on the **Found Server** window to close **Found Server** window. To confirm installation, go to the Device Manager and select Ports (COM & LPT). The installed Virtual COM port will be displayed as TRP-C31 COM#.

8-2 Configuring Virtual COM Port

The Virtual COM port can be configured in the Device Manager of the operating system or the Manager software. In either case the IP Address, Port #, Protocol, and Flow Control settings must match the TRP-C31 settings for the software to open the Virtual COM port.

STEP1. At the Desk Top select Start/Program/Trycom/TRP-C3X Manager. Double click the Virtual COM Configuration button.

STEP2. Double click the COM # displayed in the screen to open the configuration window.



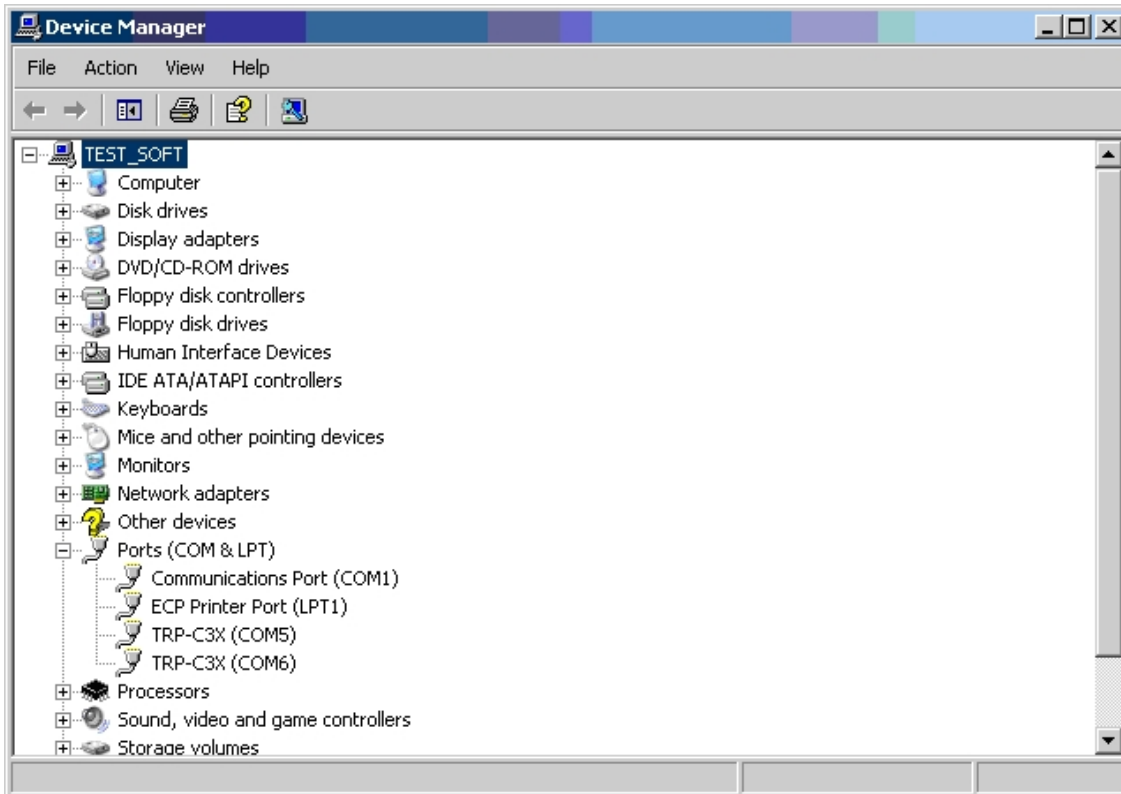
STEP3. Make the adjustments and select OK to complete the changes.

8-2-1 Configuration with Device Manager

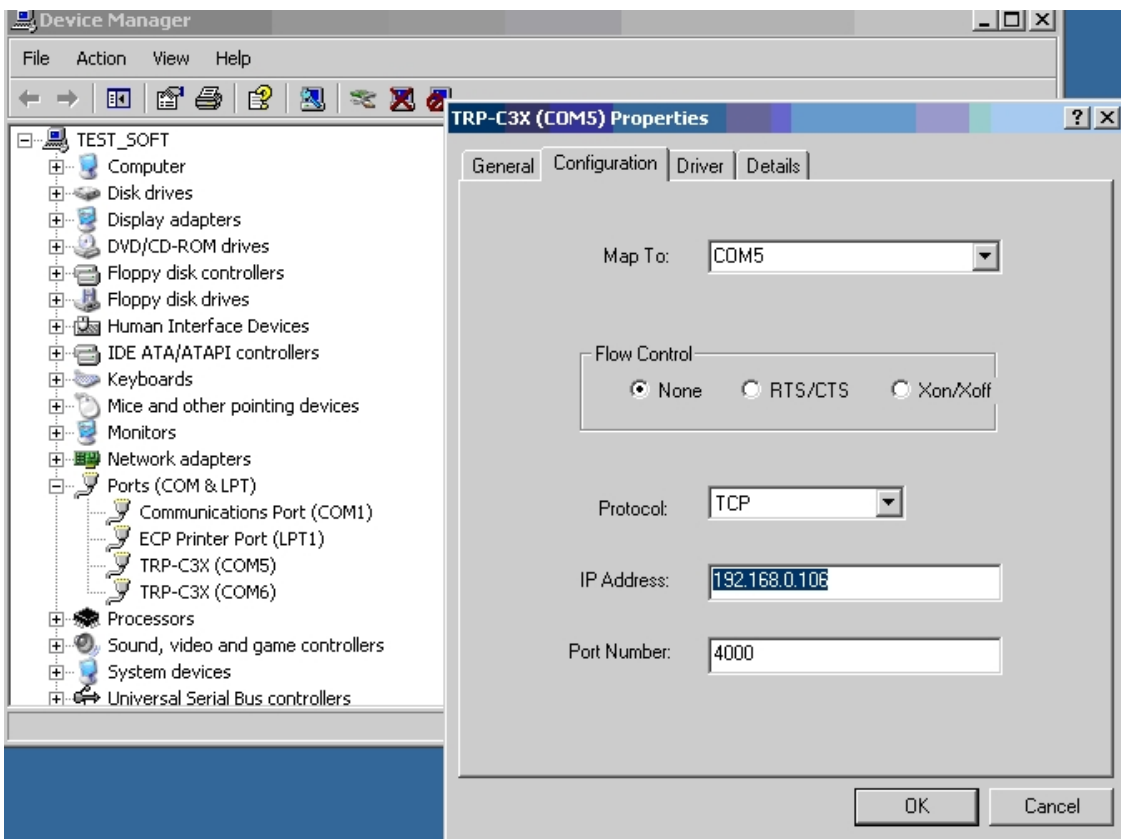
STEP1. On the Desk Top select Start/Settings/Control Panel. Select the System Icon when the Control Panel window opens.

STEP2. In the System Properties window select the Device Manager Button.

STEP3. In the Device Manager, select the + button next to Ports (COM & LPT) to expand and see the TRP-C31 (COM #). Double click TRP-C31 (COM #) to open the Properties window.



STEP4. Select the Configuration tab. From here the same settings found in the TRP-C31 Manager can be adjusted.



8-3 Uninstalling the Virtual COM Port

The TRP-C3X Manager software Uninstall Virtual Com port feature will remove the mapped COM port in the Device Manager of Windows 2000 and XP operating systems. It may also be

removed in the Device Manager of Windows 98, ME, NT, 2000, and XP. Windows 98 users will also find a Remove Virtual COM feature in the programs file.

8-4 Removing the Virtual COM port with Manager Software

STEP1 At the Desk Top select Start/Programs/Trycom/TRP-C3X Manager.

STEP2.In the Manager window select Virtual COM Configuration. Highlight the mapped COM port number to be removed.

STEP3 Select Uninstall Virtual COM button. The Manager will ask for confirmation. Select “Yes” to complete the uninstall procedure.

8-5 Removing the Virtual COM Port using Device Manager

The screen shots were taken from a Windows XP operating system

STEP1. On the Desktop select Start/Settings/Control Panel. Select the System icon when the Manager window opens.

STEP2. Select Device Manager in the Systems Properties window. In the Device Manger Window, select the + next to Ports (COM & LPT) to expand.

STEP3. Highlight TRP-C31 (COM #) to be removed, go the Action tab at the top of window , select uninstall. A confirm Device Removal window will appear. Select OK to continue.

STEP4. The TRP-C31 COM # will be removed and the Device Manager window will refresh and display the remaining COM ports.

Once all the changes have been made move to the **Configuration** screen, select **Save** and press **Enter**. The restart message will appear. Select “Yes” to save changes. This is necessary to write the settings to the server.

9. Application

The TRP-C31 allows serial devices to communicate over a LAN or Intranet network. Serial devices are no longer limited to a physical connection to the PC COM port. They can be installed anywhere on the LAN using TCP/IP or UDP/IP communications. This will also allow traditional PC COM ports access to a serial device anywhere on the LAN network.

9-1 Direct IP Mode

Direct IP connections allow applications using TCP/IP or UDP/IP network socket programs to communicate with the asynchronous serial port on the TRP-C31. In this type of application the

TRP-C31 is configured to TCP or UDP server. The socket program running on the PC establishes a communication connection with the TRP-C31. The raw data is sent directly to and from the serial port.



9-2 Virtual COM Mode

The Virtual COM mode requires the installation of a driver. When installed a new COM port is added to the Device Manager. Windows programs using standard Windows API calls will be able to interface with Virtual ports. The PC will act as the host connecting to the TRP-C31 when the program opens the virtual COM port.



Once the connection is made, the LAN is transparent to the serial device. Applications work just as if the serial device is connected a host's physical COM port. The virtual COM port converts the application's data into IP packet destined for the TRP-C31, which in turn converts the IP packet back to serial data.

In this mode, the TRP-C31 must be set to either TCP/server or UDP/server in the menu with a designated communication port number. The virtual COM driver is a TCP or UDP client.

9-3 Paired Mode

Paired mode is also called serial tunneling. When this type of configuration is selected additional software will not have to be loaded on a host PC. In fact a PC is not required to make the connection. Any two dumb serial devices are able to communicate with each other by through a serial link between two TRP-C31 and the LAN.

Two TRP-C31 are configured with one setup as a TCP or UDP client and the other to TCP/UDP server. When setting up the Server, the Remote IP address section must contain the address of the Client. This will allow the Client's IP address to pass the IP address-filtering feature of the Server. Conversely, the Remote IP address of the Client must contain the Server's IP address.



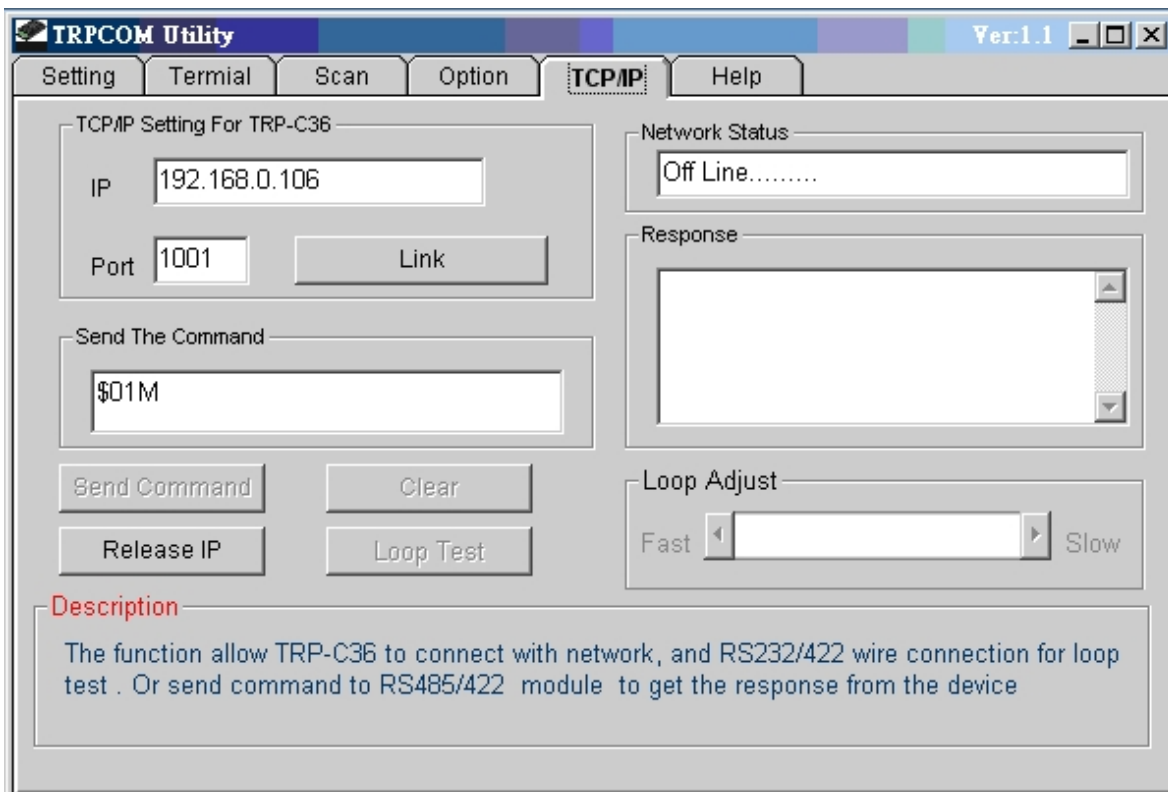
9-4 Heart Beat

The TRP-C31 provides a convenient way to establish reliable communications between two devices. Communication port 5300 is reserved for the Heartbeat Protocol. Without this feature a device that loses a connection and stops communicating would not be able to reconnect without personally attending to the problem. A TCP data connection can be lost when there is a power failure or temporary loss of an Ethernet connection on either the client or server.

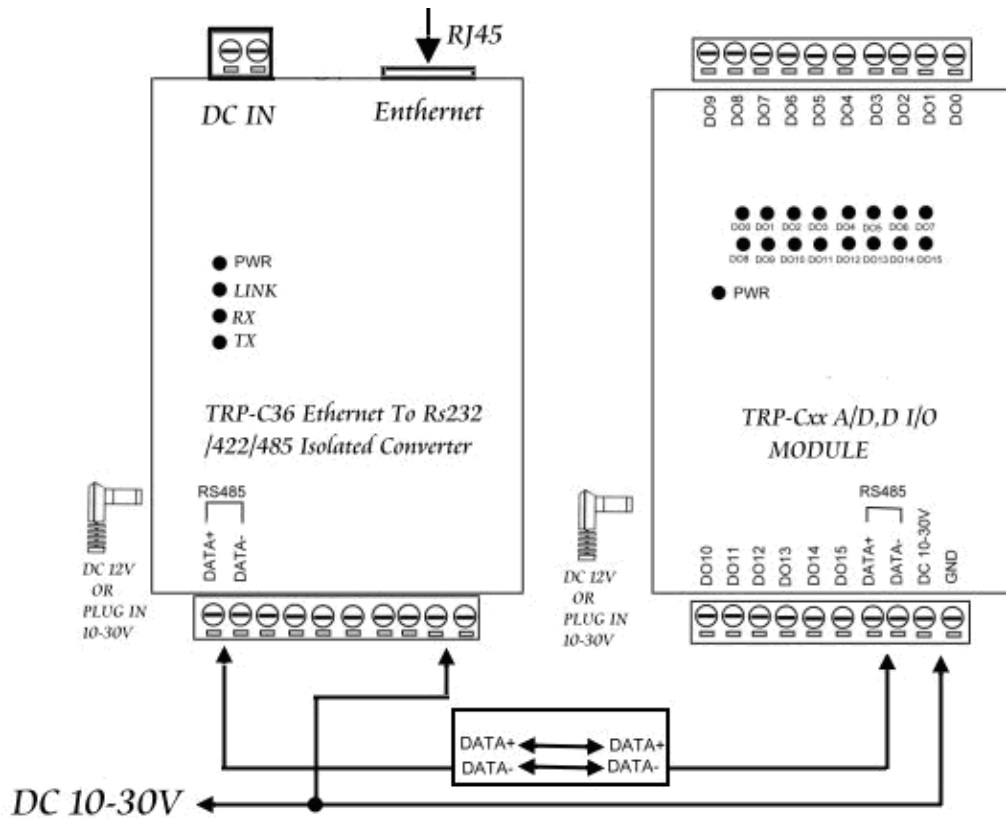
If a loss occurs the Heart Beat feature will try to reconnect the TCP data connection every 5 seconds until communications is established again. The Heart Beat feature is available to use with the Virtual COM Mode, Paired Mode and Direct IP Mode. This is not available when using a UDP application.

10. Using TRPCOM Utility For Connect RS232/422/485 Device

TRP-Serial Test Utility is demo utility which may help to test direct IP Mode .User may find the utility in the TRP-C31 support disk. Double click "Trycom Utility", the installShield Wizard will guide you complete installation.

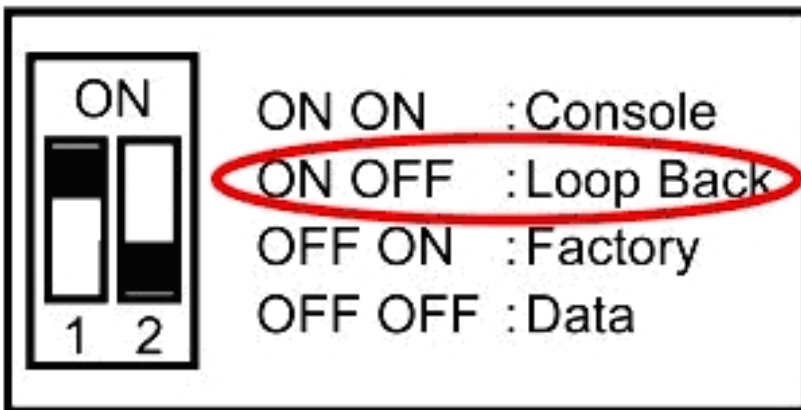


User can directly link TRP-C31 to Trycom Remote IO Modules by RS-485, The basic wiring connection as below.



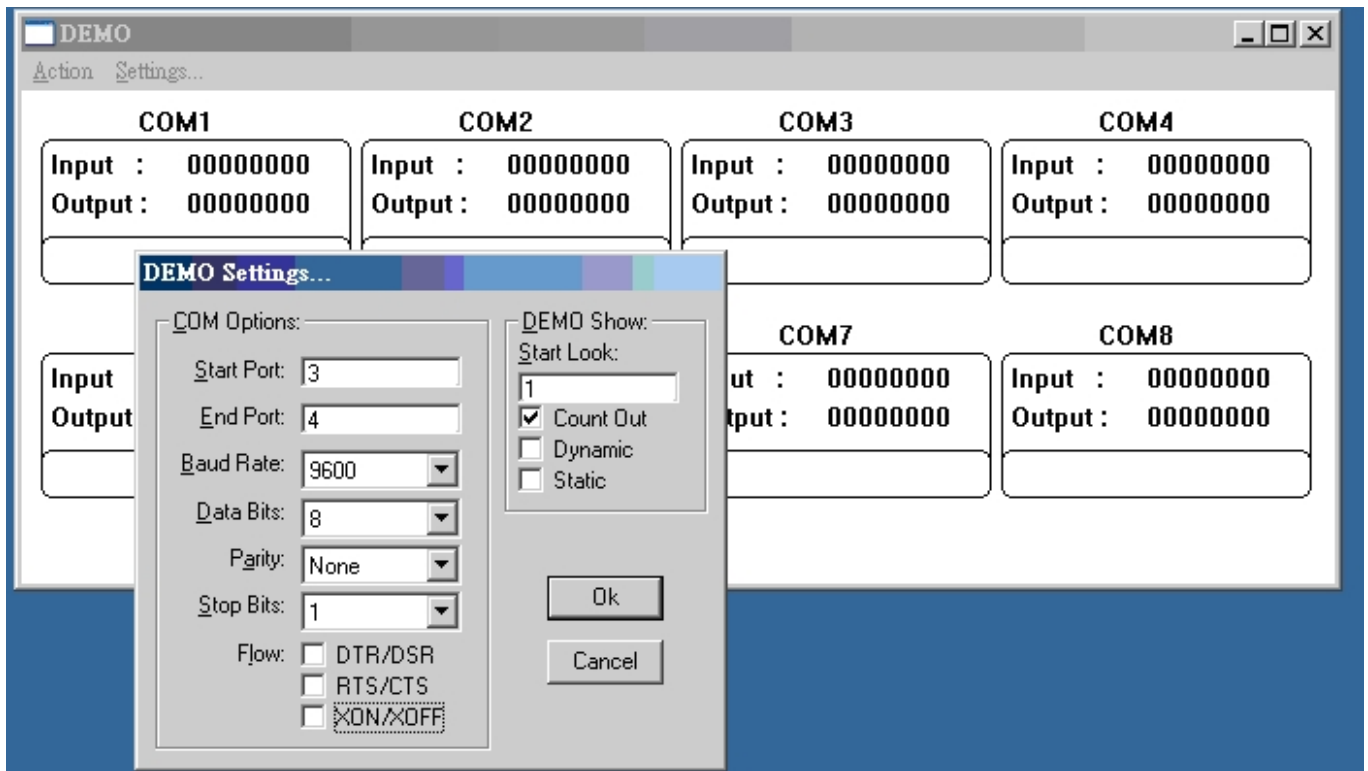
11.RS-232/422 Loop Test

STEP1. Adjust the TRP-C31's Switch to the "ON, OFF"



STEP2. Run the "Install Virtual-Com" and setting the Virtual-COM.

STEP3. Run the Demo Utility, click the "Settings" then setup the com port status and click the "Action"



12 Troubleshooting

Q: Why sometimes Hyperterminal loses characters or display funny characters?

A: This happens when you open a new Hyperterminal connection and keep inputting the same character. The reason is before Hyperterminal receiving two different characters from the other end, its status is Auto detects, and your port settings haven't fully take effect, so the transferred data is not predicable. To solve this problem, input two different characters from the other end, then the Hyperterminal status will show your port settings such as 9600 8-N-1, save this Hyperterminal connection. Next you open your saved Hyperterminal connection, everything will be fine.

Q: What should I do when I forget the IP address or baud rate setting of a TRP-C31?

A: You can use the searching capability to get the information of all TRP-C31 on the network. Double clicks on the searched result will show the detail configuration parameters of the device.

Q: Why I cannot open virtual COMx?

A: The server settings and virtual COMx settings may not match, please make sure their IP address, protocol, port and flow control mode are the same, and the remote IP address should be the host IP address. Besides the TRP-C31 cannot be at Console mode.

Q: Why the arrow keys of hyperterminal in Windows 2000 do not work in Console mode and telnet?

A: Please download new version of hyperterminal. The hyperterminal comes with Windows 2000 does not send the arrow key code properly.

Q: Why I am unable to change the parameters of port 1?

A: Serial port 1 is designated console port. The default setting for the console port is 9600 8-N-1. If the serial port 1 is set to console port. It will use the default value that is why it does response to the change. Please check hardware switch or server properties page to see if the serial port mode of the port1 is set to console. Please change it to other mode then its parameter can be changed.

Q: Why the parameters in the web console are different than those in the server properties of management utility?

A: The edited parameters in the web console only take effect after reset TRP-C31. Web console show the edited configuration while in the management utility show the running configuration. That is why they might appear differently it is not recommended to edit server's configuration using two different tools at the same time. Because all change could be over-written by other method.